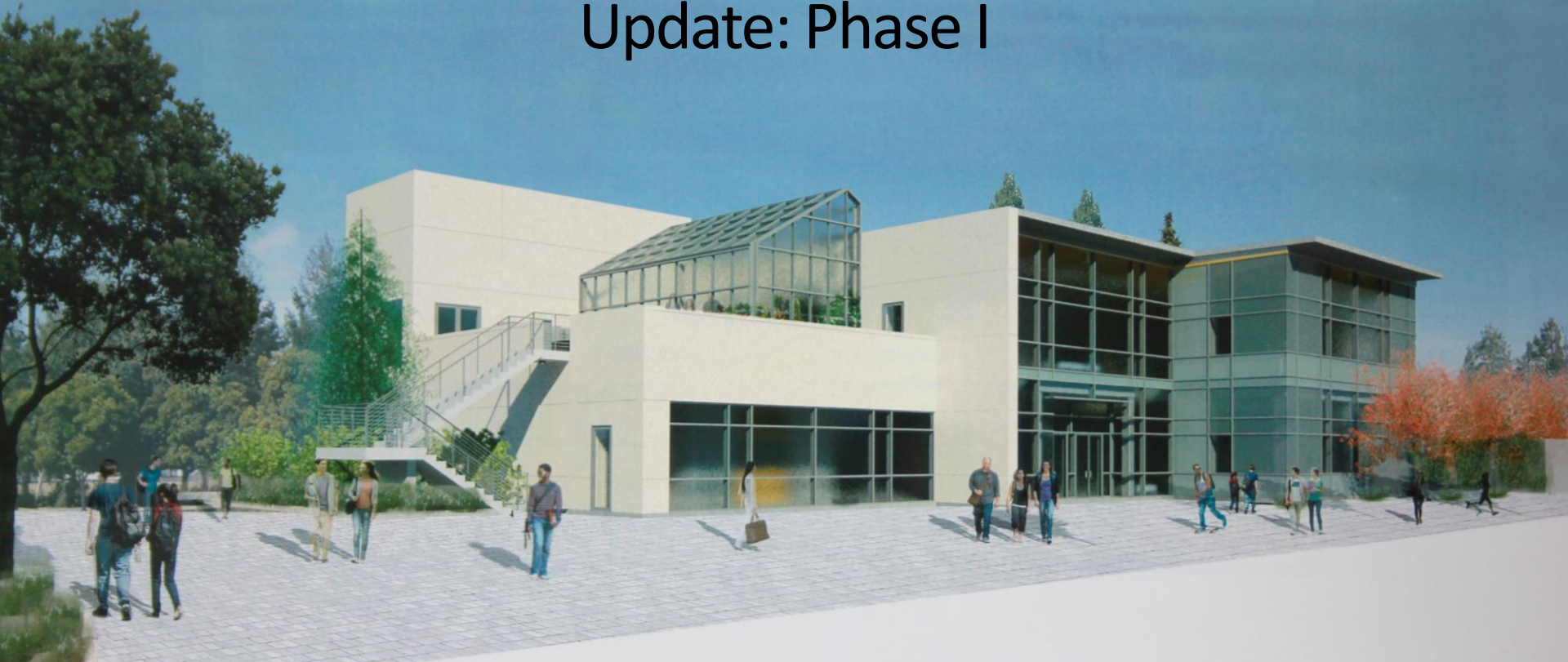


Biological Sciences Building, 2100

Update: Phase I

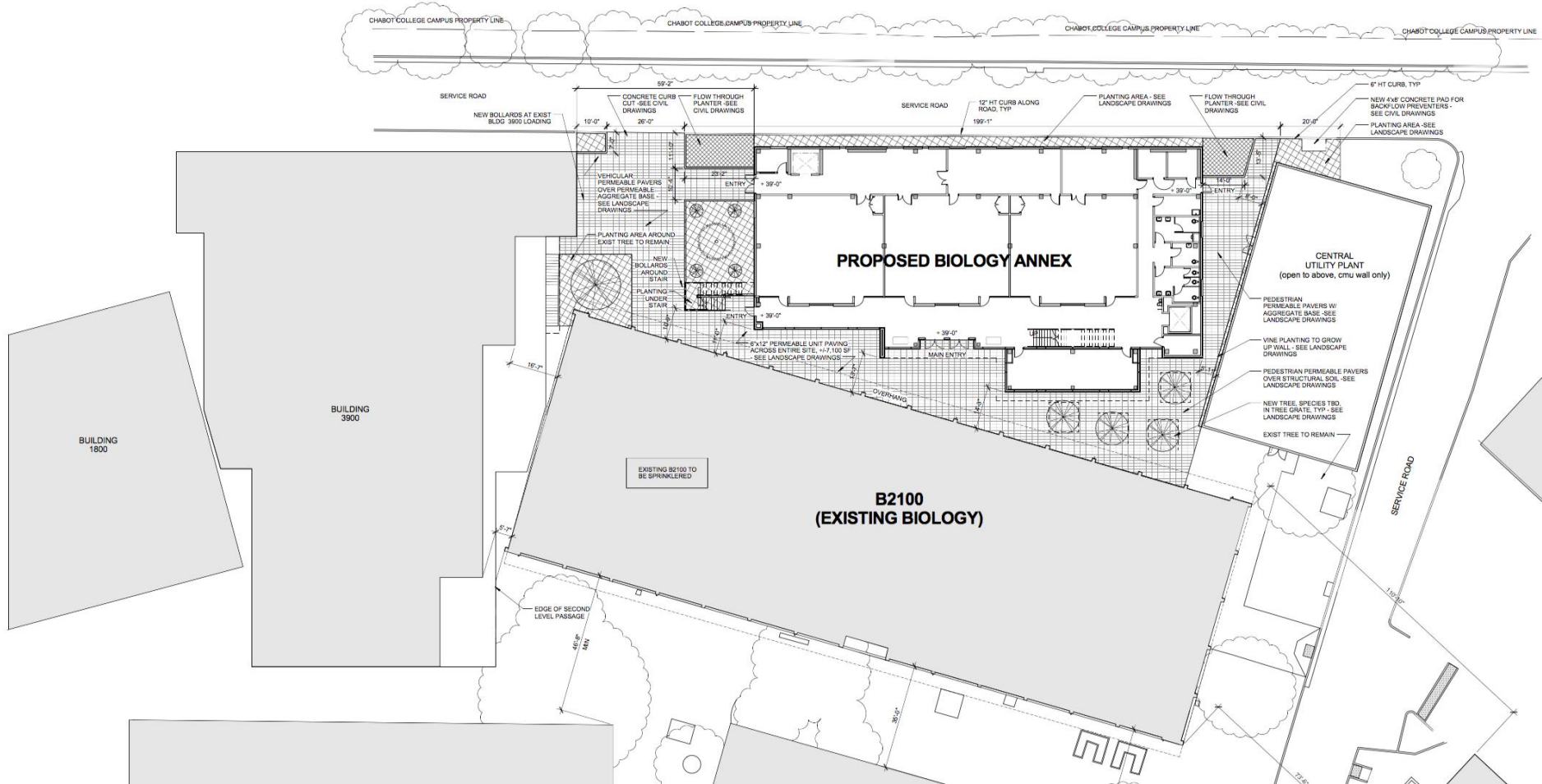


Construction Cost: \$ 16.8 Million
Size: 38,784 ft²
Projected Occupancy: Summer/Fall 2019

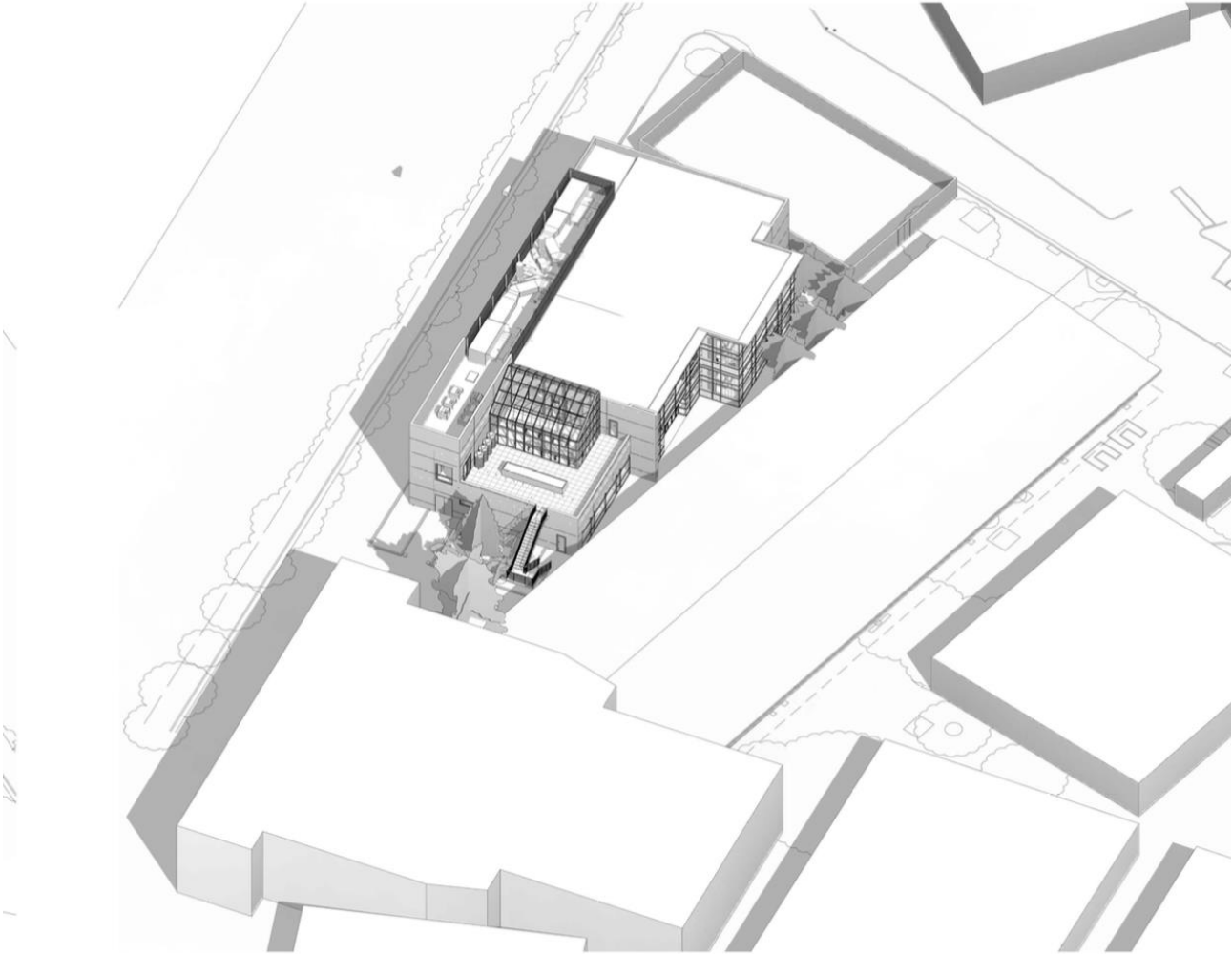
Harley Ellis Devereaux
Architects



Location: Parking Lot C



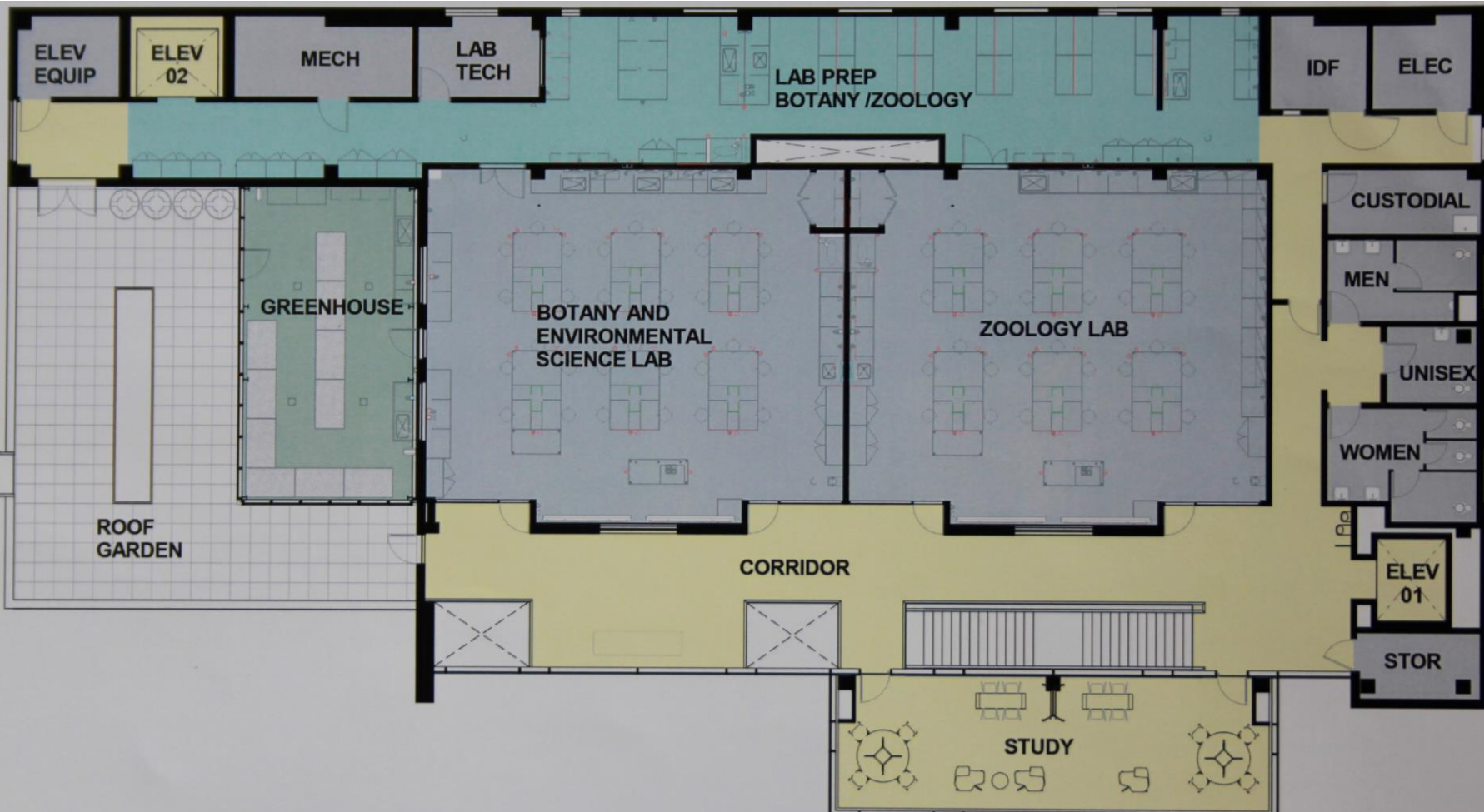
Location: Parking Lot C



1st Floor Plan



2nd Floor Plan



2nd Floor Corridor



Standard Lab Room Layout



Botany Room Layout

